

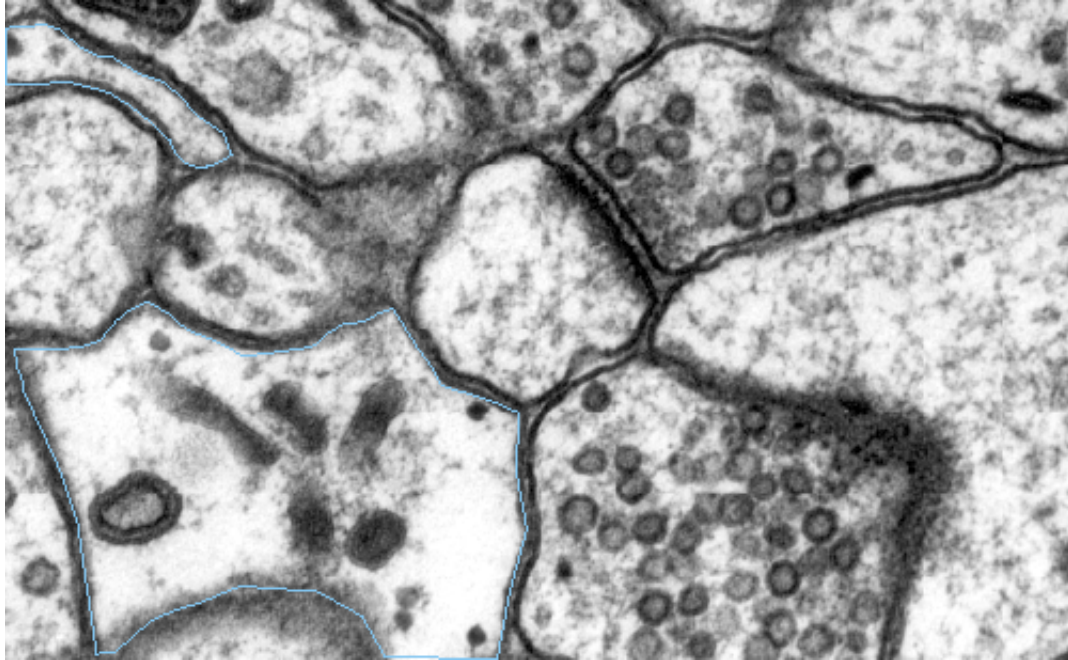


# Synapse Web

About | Anatomy | Links | Publications | Search | Tools

## [Astrocytes in the hippocampus...](#)

### The cytoplasm of astrocytes



The cytoplasm of an astrocyte (outlined in blue) differs from that of neighboring objects in the neuropil. Astrocyte cytoplasm is generally less electron dense than that of neurons.

*Last Updated: 8/9/00*